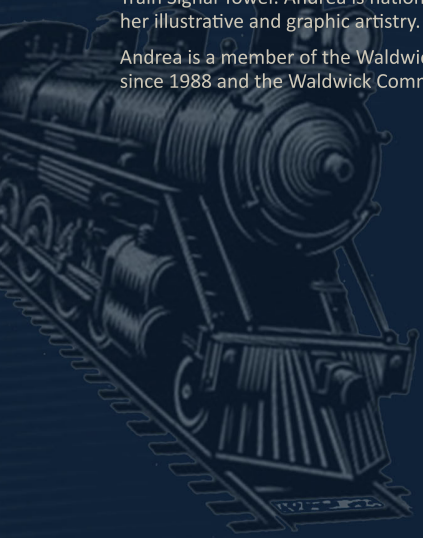


2025 Calendar & Reference Guide *(through January 2026)*

Cover art and design: Andrea Mistretta is a Waldwick native and resident who grew up next to the Waldwick Train Signal Tower. Andrea is nationally renowned for her illustrative and graphic artistry.

Andrea is a member of the Waldwick Historical Society since 1988 and the Waldwick Community Alliance.



TOWER **WALDWICK** **DEPOT**

One Bohnert Place

Four Hewson Avenue

A MESSAGE FROM THE MAYOR

My Dear Neighbors and Friends:

I would like to take this opportunity to wish all of you and your families the very best in the New Year. May we all enjoy a safe, healthy and prosperous 2025.

A special thank you to Andrea Mistretta on designing our 2025 calendar cover. Andrea Mistretta reimagines the historic painting she created 35 years ago for Waldwick's 75th Anniversary. The art depicts a typical locomotive steam engine that would have passed through Waldwick when it was incorporated in 1919. Beside the engine are two of Waldwick's architectural gems: The Interlocking Train Signal Tower and the Waldwick Train Station. Both buildings are characteristic Queen Anne Stick Style. Its gingerbread-cut details are highlighted as a design element within the cover's artwork.

I would like to congratulate Katie Cericola, Mike Ritchie and Mark Ramundo on being re-elected to town council. I look forward to working alongside all of you, and with the entire council who all have a genuine, deep love for our community and work exceptionally hard to serve our residents. Together we will build upon the tremendous momentum that has already been established in Waldwick.

As a governing body, we continue to make substantial progress on important programs and policies that not only save tax dollars but strengthen, improve services and the quality of life for all Waldwick residents.

Waldwick is a great place to live, work, shop, raise a family and be part of a multi-faceted, loving and caring community. We are so proud of the range of services available to our residents, some of which are outlined in this calendar.

Our continued progress and success are the result of a combined effort on the part of our Elected officials, Administrative staff, Borough employees and Emergency Service personnel.

To all our residents who volunteer their time and talents serving on different boards, organizations, and clubs, your enthusiasm and dedication to serve remain our greatest assets.

To all our businesses, we thank you for investing in Waldwick and being a part of The Waldwick Family.

To all our Waldwick Veterans, thank you for your service to our country and community. To our elderly, thank you for your examples. To our young residents, thank you for your hope and optimism.

Many things have changed in Waldwick over the years but what remains the same are the values of those who live and work within our borders. Values such as family, hard work, integrity, volunteerism, kindness, leadership, respect, generosity, and diversity.

It has often been said that the measure of a community can be determined by the quality of its most valuable resource, its people. It is all of us, past residents, present residents and future residents who will make Waldwick better, stronger and more powerful for our tomorrow.

We have many challenges ahead of us in 2025 but together we will work hard to meet them. Together we will bring Waldwick into the future with the "Light of Waldwick" leading the way.

"Life is divided into three terms - that which was, which is, and which will be. Let us learn from the past to profit by the present, and from the present, to live better in the future." -William Wordsworth

God Bless all of you, our country and our home Waldwick.

Your friend Tom Giordano

The Waldwick Borough Council

Mayor Thomas A. Giordano

tgiordano@waldwicknj.gov

Andrew Brennecke

abrennecke@waldwicknj.gov

Mark Ramundo

mramundo@waldwicknj.gov

Kathleen E. Cericola-Drake

kcericola@waldwicknj.gov

Michael F. Ritchie, Jr.

mritchie@waldwicknj.gov

Joseph Martinello

martinello@waldwicknj.gov

Michele S. Weber

mweber@waldwicknj.gov

STAYING CONNECTED



Borough website

Visit the Borough's website, www.waldwicknj.gov to access forms, useful links and the municipal directory.



Visit us on our Borough of Waldwick Facebook Page

Stay connected with the Borough of Waldwick for updates, alerts and event schedules.



Visit us on Instagram

@borough_of_waldwick



Community News Sign Up - Constant Contact

We kindly invite you to sign up for Constant Contact, ensuring that you continue to enjoy our weekly and monthly newsletters as well as any non-emergency Borough related news. To sign up, go to the homepage of our website, www.waldwicknj.gov and click on the Community News Sign Up button located in the middle of the page.



Emergency Notifications Sign Up - Nixle

Nixle will continue to be the platform for all urgent Police emergency notifications. To stay in the loop when it matters most, sign up on the homepage of our website, www.waldwicknj.gov and click on Emergency Notifications Sign Up button located in the middle of the page.



Drop Box - Administration Building

A Drop Box for Borough mail is located outside the Administration Building, 63 Franklin Turnpike and is accessible for residents 24 hours a day.

Sunday	Monday	Tuesday	Wednesday	Thursday	Friday	Saturday
December 2024 S M T W T F S 1 2 3 4 5 6 7 8 9 10 11 12 13 14 15 16 17 18 19 20 21 22 23 24 25 26 27 28 29 30 31			New Year's Day 1 BOROUGH OFFICES & RECYCLING CENTER CLOSED Library Closed No Garbage Collection	2 Recycling Collection Commingled Containers	3	4 Styrofoam Recycling Collection 9:00am - 1:00pm
5	6 Heavy Metal Pickup Schedule by December 31 Christmas Tree Pickup Franklin Tpke and West to Wyckoff	7 Christmas Tree Pickup East of Franklin Tpke to Saddle River	8 Recycling Collection Cardboard/Mixed Paper	9	10	11 Borough Waste Disposal Day 9:00am - 3:00pm • Rain or shine
12	13 Christmas Tree Pickup Franklin Tpke and West to Wyckoff	14 Borough Council Meeting 7:30pm • Administrative Building Christmas Tree Pickup East of Franklin Tpke to Saddle River	15 Recycling Collection Commingled Containers	16 Bulk Collection Schedule by January 10	17	18
19	Martin Luther King Jr. Day 20 Electronics Pickup Schedule by January 15 Christmas Tree Pickup Franklin Tpke and West to Wyckoff	21 Christmas Tree Pickup East of Franklin Tpke to Saddle River	22 Recycling Collection Cardboard/Mixed Paper	23	24	25
26	27	28 Borough Council & Budget Meeting 6:30pm • Administrative Building	29 Recycling Collection Commingled Containers	30	31	February 2025 S M T W T F S 1 2 3 4 5 6 7 8 9 10 11 12 13 14 15 16 17 18 19 20 21 22 23 24 25 26 27 28

Police (201) 652-5700 • Emergency 911

WE HAVE WHAT YOU NEED WHEN YOU NEED IT

M-F 8:00-6:00pm
 Sat 8:00-5:00pm
 Sun 9:00-3:00pm
Waldwick Paint closed Sunday



Home Hardware 201-652-5666 • Waldwick Paint 201-444-2882




CHRISTIE'S
 INTERNATIONAL REAL ESTATE - NORTHERN NEW JERSEY

JoAnne Basile, GRI
 Realtor-Associate®
 201-410-4826 Cell
 201-904-2085 Office
 joanneb804@aol.com

David P. Barthold
 Realtor-Associate®
 201-481-1572 Cell
 201-904-2085 Office
 njrebart@aol.com

Bartold-BasileTeam.com

GARBAGE & RECYCLING

RECYCLING CENTER

19 Industrial Park

Monday through Friday, 7:30am – 3:00pm

Saturday, 9:00am – 1:00pm

GARBAGE RULES & PICKUP SCHEDULE

Garbage is collected curbside twice weekly, year-round. Garbage cans containing trash must be water tight and have lids. Residents are permitted a **maximum of two (2) 50 gallon/50 lb. containers, or bundles not exceeding 4 ft. and 50 lbs. total per pickup.** Containers/bundles **MUST be curbside by 6:00am** on the day of your pickup and removed from the curb by the end of the day.

COLLECTION SCHEDULE

Monday & Thursday Collection

West of, and including, Franklin Turnpike to Wyckoff border.

Tuesday & Friday Collection

East of Franklin Turnpike to Saddle River border.

Garbage is not collected on New Year's Day, Thanksgiving Day or Christmas Day. If one of these holidays falls on your collection day, garbage will be collected on your next regularly scheduled collection day.

BULK RULES & PICKUP SCHEDULE

Residents must schedule a **bulk pickup by filling out the online form on the Borough's website.** The office must receive your request by 2:00 pm on the Friday before the scheduled pickup in order to be included. See collection schedule below.

Residents are permitted a **maximum of two (2) bulk items**, limited to household furniture, including couches, dressers, mattresses, etc. to be placed curbside on the third Thursday of each month. ***Once scheduled, item(s) must be curbside by 6:00am on day of pickup or put curbside no sooner than the day before pickup.***

RECYCLING SCHEDULE

COMMINGLED CONTAINERS COLLECTION includes plastics #1, #2, & #5, glass jars/bottles and aluminum & tin cans and will be collected curbside loose in a container every other Wednesday as shown in the 2025 municipal calendar.

CARDBOARD/MIXED PAPER COLLECTION (newspapers, magazines, books, and junk mail) will be collected curbside loose in a container along with cardboard every other Wednesday as shown in the 2025 municipal calendar.

**RECYCLING MUST BE CURBSIDE BY 6:00AM ON SCHEDULED PICKUP DAY.
RECYCLABLES IN PLASTIC BAGS WILL NOT BE COLLECTED.**

HEAVY METAL & ELECTRONICS COLLECTION

Residents must schedule their **Heavy Metal and/or Electronics pickup using the online form which can be found on the Borough's website.** The office must receive your request by 2:00pm on the Wednesday before the scheduled pickup in order to be included. See Collection Schedule below. ***Once scheduled, item(s) must be curbside by 6:00am on day of pickup or put curbside no sooner than the day before pickup.***

Heavy Metal pickup is the **first Monday of each month** (except on holidays, which is shown in the 2025 municipal calendar).

Accepted heavy metal include: Stoves, refrigerators, lawn mowers, washer/dryer machines, dishwashers, microwaves, hot water heaters, disassembled metal swing sets, iron railings, pipes, air conditioners and grills.

Electronics pickup is the **third Monday of each month** (except on holidays, which is shown in the 2025 municipal calendar).

Accepted electronics include: Computers and computer components (such as monitors and keyboards), copiers, radios and flat screen televisions. **By law, televisions, computers and computer components must be recycled. NOTHING WITH WOOD.**

2025 BULK COLLECTION SCHEDULE

January 16 (schedule by January 10)

February 20 (schedule by February 14)

March 20 (schedule by March 14)

April 17 (schedule by April 11)

May 15 (schedule by May 9)

June 19 (schedule by June 13)

July 17 (schedule by July 11)

August 21 (schedule by August 15)

September 18 (schedule by September 12)

October 16 (schedule by October 10)

November 20 (schedule by November 14)

December 18 (schedule by December 12)

January 15, 2026 (schedule by January 9)

Sunday	Monday	Tuesday	Wednesday	Thursday	Friday	Saturday
January S M T W T F S 1 2 3 4 5 6 7 8 9 10 11 12 13 14 15 16 17 18 19 20 21 22 23 24 25 26 27 28 29 30 31	March S M T W T F S 1 2 3 4 5 6 7 8 9 10 11 12 13 14 15 16 17 18 19 20 21 22 23 24 25 26 27 28 29 30 31					1 Tax & Water Payments Due Special Budget Meeting 8:30am • Administrative Building
2	3	4	5	6	7	8
	Heavy Metal Pickup Schedule by January 29		Recycling Collection Cardboard/Mixed Paper			
9	10	11	12	13	14	15
	Last day to pay Taxes & Water without interest	Borough Council Meeting 7:30pm • Administrative Building	Recycling Collection Commingled Containers		Valentine's Day	
16	17	18	19	20	21	22
	PRESIDENTS' DAY BOROUGH OFFICES & RECYCLING CENTER CLOSED Library Closed		Recycling Collection Cardboard/Mixed Paper	Bulk Collection Schedule by February 14		
23	24	25	26	27	28	
	Electronics Pickup* Schedule by February 19	Borough Council Meeting 7:30pm • Administrative Building	Recycling Collection Commingled Containers		Ramadan Begins	

Police (201) 652-5700 • Emergency 911



Rocco A. Palaia
Tax Consultant

Accounting Services - Income Tax Preparation - QuickBooks Pro-Advisors
 Financial Planning - Retirement Planning - Estate Planning
 204 Warren Avenue • Suite 203 • Ho-Ho-Kus, NJ 07423
201-445-0086 • www.roccopty.com



Gina Diaz
Sales Associate
201.694.1216 (C)
gdiaz@toocr.com



Mary Beth Nappi
Sales Associate
201.693.7841 (C)
mnappi@toocr.com



Mary Ellen O'Connell
Broker Associate
201.786.1169 (C)
moconnell@toocr.com

TERRIE O'CONNOR
REALTORS
-The Liberty Group-

Waldwick Experts –
Living Here, Working for You!

201.825.0500 | TOCR.COM
75 W. ALLENDALE AVE ALLENDALE, NJ 07401

BERGEN COUNTY UTILITY AUTHORITY'S (BCUA) 2025 COLLECTION EVENTS

Household Hazardous Waste (HHW) Collection Event Dates:

Bergen County Utilities Authority
Foot of Empire Blvd., Moonachie
 Saturday, March 8, 2025
 Saturday, November 15, 2025

Bergen County Campgaw Mountain Reservation
200 Campgaw Rd., Mahwah
 Saturday, May 10, 2025
 Saturday, July 19, 2025
 Saturday, September 6, 2025

Bergen Community College
400 Paramus Rd., Paramus
 Sunday, April 6, 2025
 Sunday, June 8, 2025
 Sunday, October 19, 2025

***HHW event collection hours are 9:00 a.m. - 3:00 p.m. (rain or shine)**

Document Shredding, Electronics Recycling and Tire Recycling Event Dates:

Bergen Community College
400 Paramus Rd., Paramus
 Sunday, April 13, 2025
 Saturday, August 9, 2025

Bergen County Campgaw Mountain Reservation
200 Campgaw Rd., Mahwah
 Saturday, June 14, 2025
 Sunday, October 5, 2025

***Document shredding, electronics and tire recycling event collection hours are 9:00 a.m. - 2:00 p.m. (rain or shine)**

For more information, please visit www.bcu.org

YARD WASTE WEEKLY COLLECTION

The weekly grass, brush and branch collection will begin on **April 8, 2025** and **end on October 13, 2025**. The collection schedule is listed below and must be curbside by 6:00am on day of pickup. Please be aware of the following information:

- All yard waste, including brush, branches, grass and leaves must be put out the night before pickup or by 6:00am in a can/container or brown biodegradable yard waste bags.
- A maximum of 4 containers/cans up to 50 lbs. will be picked up per collection day.
- Yard waste in plastic bags will NOT be accepted/collected.
- Containers must only be filled up to the rim; they will not be picked up with material sticking out above the rim. Please help keep our DPW safe.
- The Borough will not pick up yard waste left on the ground.
- Residents can bring yard waste to the Recycling Center during normal business hours.

Monday - Friday, 7:30am - 3:00pm and Saturdays 9:00am - 1:00pm

SCHEDULE:

Tuesdays: North of East Prospect Street to Allendale/Saddle River border; all streets from Franklin Turnpike to Nordham Street, not including Franklin Turnpike.

Wednesdays: Both sides of Crescent Avenue to the Wyckoff border and the area east of Route 17 North.

Thursdays: Both sides of Franklin Turnpike to Crescent Avenue.

Fridays: Both sides of East Prospect Street to Ho-Ho-Kus border, all streets between Nordham Street to Route 17 South.

CURBSIDE LEAF COLLECTION SCHEDULE

Leaves will be picked up by voting district. Please note that there may be variations in the schedule due to weather conditions/emergencies.

Voting district	1st Pickup	2nd Pickup	3rd Pickup
4	10/23	11/19	12/19
6	10/27	11/24	12/19
3	10/30	12/2	12/19
5	11/4	12/5	
1	11/7	12/10	
2	11/14	12/16	

Residents should rake leaves to the curb or place bagged leaves in brown biodegradable paper bags curbside no more than seven days prior to the scheduled pickup dates listed above. Leaves in plastic bags will not be collected. To help prevent street flooding, please do not place leaves within 10 feet of any storm drain inlet.

Residents may also bring their leaves and any other yard waste to the Recycling Center, 19 Industrial Park during normal business hours (Monday - Friday 7:30 am - 3:00 pm and Saturdays 9:00 am - 1:00 pm).

Sunday	Monday	Tuesday	Wednesday	Thursday	Friday	Saturday
February S M T W T F S 1 2 3 4 5 6 7 8 9 10 11 12 13 14 15 16 17 18 19 20 21 22 23 24 25 26 27 28	April S M T W T F S 1 2 3 4 5 6 7 8 9 10 11 12 13 14 15 16 17 18 19 20 21 22 23 24 25 26 27 28 29 30					1
2	3 Heavy Metal Pickup Schedule by February 26	4	5 Recycling Collection Cardboard/Mixed Paper	6	7	8
9 Daylight Savings Time Begins Test your smoke alarms	10	11 Borough Council Meeting 7:30pm • Administrative Building	12 Recycling Collection Commingled Containers	13	14	15
16	17 St. Patrick's Day Electronics Pickup Schedule by March 12	18	19 Recycling Collection Cardboard/Mixed Paper	20 Spring Begins Bulk Collection Schedule by March 14	21	22
23	24	25	26	27	28	29
30 Ramadan Ends	31	Borough Council Meeting 7:30pm • Administrative Building	Recycling Collection Commingled Containers			

Police (201) 652-5700 • Emergency 911



Softwash Specialists
551-388-9200
 Locally Owned & Operated | Fully Insured

We Clean the Green!
 We offer exterior cleaning services including:
SIDING • ROOFS • FENCING • WINDOWS • PATIOS
CONCRETE • PAVERS • GUTTERS • DECKS

CALL US FOR A FREE ESTIMATE
 Troy@pristinepowerwashnj.com | Doug@pristinepowerwashnj.com



Allendale/Waldwick PBA Local 217
EASTER EGG HUNT
Saturday, April 12th • 10:00 am
Raindate - Saturday, April 19th • 10:00am

WASTE DISPOSAL DAYS – NEW DATES

Residents may dispose of tires, batteries and wood waste on special collection days set for **Saturday, January 11, Saturday, April 12, Saturday, July 12 and Saturday, October 11** from 9:00am – 3:00pm, rain or shine at the Recycling Center, 19 Industrial Park. Tires with or without rims will be collected, as well as car and truck batteries. All wood including pressure treated will be accepted. Screens and glass must be removed from any wood being recycled. No stumps,

large limbs or logs will be accepted; however, split wood



in small pieces will be accepted. **This disposal event is for residents only. No Contractors, IDs will be checked.**

TAX APPEAL DEADLINE – April 1

Any taxpayer may file a tax appeal on their assessment after January 1, 2025 but no later than April 1, 2025. The homeowner must contact the Bergen County Board of Taxation at 201-336-6300 to obtain an appeal form or file it online at <https://co.bergen.nj.us/bergen-county-board-of-taxation/about-board-of-taxation>.

Appeals with an assessment in excess of \$1 million may be filed directly to the State Tax Court in Trenton. Appeals of added/omitted assessments must be filed by December 1 with the Bergen County Tax Board.



**IF YOU LITTER
IN THE STREET,
YOU MIGHT AS WELL
LITTER IN THE RIVER.**



**Rain washes pollutants into storm drains
and directly into our lakes,
rivers and the ocean.
So what can you do?**



www.cleanwaterNJ.org

WHAT'S THE PROBLEM WITH LITTER?

When was the last time you saw someone littering? Litter just doesn't appear — it's the result of careless actions. No matter where litter is discarded, it usually ends up in the street, where it washes down storm drains and ultimately flows to local waterways.

Littering is not only unsightly, it's a threat to wildlife and their habitat. Before you flick a cigarette butt out of your window or throw out a plastic bottle, consider this: Cigarette filters have been found in the stomachs of marine life, birds, and other animals, because they thought it was food. Birds and marine life have also been found trapped or tangled in plastic items such as six-pack drink holders, plastic bags and fishing line. Please be considerate, and protect our wildlife and our water.

YOU CAN HELP!

- Set an example for others, especially children, by not littering.
- Carry a litterbag in your car.
- Make sure trash cans have lids that can be securely fastened.
- If you have curbside trash collection, don't put loose trash in boxes.
- Prevent trash cans from being knocked over by the wind and animals.
- Tie papers in a bundle before placing them in a curbside recycling bin.
- If you own a business, check dumpsters daily to see that top and side doors are closed.
- If you or a family member is involved in a civic group, scouting, or recreational sports program, encourage the group to "adopt" a spot in your town and maintain it on a regular basis.
- Report areas where people have illegally dumped garbage and debris and ask that the material be removed.
- Volunteer to help organize a cleanup.

WHY SHOULD YOU CARE ABOUT CLEAN WATER?

Stormwater pollution is one of the greatest threats to New Jersey's clean water supply. Clean water provides access to safe drinking water, places for recreation, commercial opportunities, healthy wildlife habitats, and adds beauty to our landscape. Rain washes pollution from streets, parking lots, and lawns into storm drains, then directly to our streams, rivers, lakes and the ocean.

Did you know more than 60 percent of water pollution comes from things such as motor oil, fertilizers, pet waste and detergents? By sharing the responsibility and making small, easy changes in our daily lives, we can keep common pollutants out of stormwater.



www.cleanwaterNJ.org



Thanks to the Washington State Department of Ecology, King County, and the cities of Bellevue, Seattle and Tacoma.

Sunday	Monday	Tuesday	Wednesday	Thursday	Friday	Saturday																																																																																											
		1 Pool Registration Opens	2 Recycling Collection Cardboard/Mixed Paper	3	4	5 Styrofoam Recycling Collection 9:00am - 1:00pm																																																																																											
6	7 Heavy Metal Pickup Schedule by April 2	8	9 Recycling Collection Commingled Containers	10	11	12 PBA Egg Hunt 10:00am • Raindate April 19 Borough Shred Day 9:00am - 1:00pm • DPW • Rain or shine Borough Waste Disposal Day 9:00am - 3:00pm • DPW • Rain or shine																																																																																											
Palm Sunday 13	14	15 Borough Council Meeting 7:30pm • Administrative Building	16 Recycling Collection Cardboard/Mixed Paper	17 Bulk Collection Schedule by April 11	Good Friday 18 BOROUGH OFFICES & RECYCLING CENTER CLOSED Library Closed	19																																																																																											
Easter 20	21 Electronics Pickup Schedule by April 16	Earth Day Passover Begins at sundown 22	23 Recycling Collection Commingled Containers	24	25	26																																																																																											
27	28	29 Borough Council Meeting 7:30pm • Administrative Building	30 Recycling Collection Cardboard/Mixed Paper		<p style="text-align: center;">March</p> <table style="width: 100%; border-collapse: collapse;"> <tr> <td style="text-align: center;">S</td> <td style="text-align: center;">M</td> <td style="text-align: center;">T</td> <td style="text-align: center;">W</td> <td style="text-align: center;">T</td> <td style="text-align: center;">F</td> <td style="text-align: center;">S</td> </tr> <tr> <td></td> <td></td> <td></td> <td></td> <td></td> <td></td> <td style="text-align: center;">1</td> </tr> <tr> <td style="text-align: center;">2</td> <td style="text-align: center;">3</td> <td style="text-align: center;">4</td> <td style="text-align: center;">5</td> <td style="text-align: center;">6</td> <td style="text-align: center;">7</td> <td style="text-align: center;">8</td> </tr> <tr> <td style="text-align: center;">9</td> <td style="text-align: center;">10</td> <td style="text-align: center;">11</td> <td style="text-align: center;">12</td> <td style="text-align: center;">13</td> <td style="text-align: center;">14</td> <td style="text-align: center;">15</td> </tr> <tr> <td style="text-align: center;">16</td> <td style="text-align: center;">17</td> <td style="text-align: center;">18</td> <td style="text-align: center;">19</td> <td style="text-align: center;">20</td> <td style="text-align: center;">21</td> <td style="text-align: center;">22</td> </tr> <tr> <td style="text-align: center;">23</td> <td style="text-align: center;">24</td> <td style="text-align: center;">25</td> <td style="text-align: center;">26</td> <td style="text-align: center;">27</td> <td style="text-align: center;">28</td> <td style="text-align: center;">29</td> </tr> <tr> <td style="text-align: center;">30</td> <td style="text-align: center;">31</td> <td></td> <td></td> <td></td> <td></td> <td></td> </tr> </table>	S	M	T	W	T	F	S							1	2	3	4	5	6	7	8	9	10	11	12	13	14	15	16	17	18	19	20	21	22	23	24	25	26	27	28	29	30	31						<p style="text-align: center;">May</p> <table style="width: 100%; border-collapse: collapse;"> <tr> <td style="text-align: center;">S</td> <td style="text-align: center;">M</td> <td style="text-align: center;">T</td> <td style="text-align: center;">W</td> <td style="text-align: center;">T</td> <td style="text-align: center;">F</td> <td style="text-align: center;">S</td> </tr> <tr> <td></td> <td></td> <td></td> <td></td> <td></td> <td></td> <td style="text-align: center;">1 2 3</td> </tr> <tr> <td style="text-align: center;">4</td> <td style="text-align: center;">5</td> <td style="text-align: center;">6</td> <td style="text-align: center;">7</td> <td style="text-align: center;">8</td> <td style="text-align: center;">9</td> <td style="text-align: center;">10</td> </tr> <tr> <td style="text-align: center;">11</td> <td style="text-align: center;">12</td> <td style="text-align: center;">13</td> <td style="text-align: center;">14</td> <td style="text-align: center;">15</td> <td style="text-align: center;">16</td> <td style="text-align: center;">17</td> </tr> <tr> <td style="text-align: center;">18</td> <td style="text-align: center;">19</td> <td style="text-align: center;">20</td> <td style="text-align: center;">21</td> <td style="text-align: center;">22</td> <td style="text-align: center;">23</td> <td style="text-align: center;">24</td> </tr> <tr> <td style="text-align: center;">25</td> <td style="text-align: center;">26</td> <td style="text-align: center;">27</td> <td style="text-align: center;">28</td> <td style="text-align: center;">29</td> <td style="text-align: center;">30</td> <td style="text-align: center;">31</td> </tr> </table>	S	M	T	W	T	F	S							1 2 3	4	5	6	7	8	9	10	11	12	13	14	15	16	17	18	19	20	21	22	23	24	25	26	27	28	29	30	31
S	M	T	W	T	F	S																																																																																											
						1																																																																																											
2	3	4	5	6	7	8																																																																																											
9	10	11	12	13	14	15																																																																																											
16	17	18	19	20	21	22																																																																																											
23	24	25	26	27	28	29																																																																																											
30	31																																																																																																
S	M	T	W	T	F	S																																																																																											
						1 2 3																																																																																											
4	5	6	7	8	9	10																																																																																											
11	12	13	14	15	16	17																																																																																											
18	19	20	21	22	23	24																																																																																											
25	26	27	28	29	30	31																																																																																											

Police (201) 652-5700 • Emergency 911



La Torre

Landscaping

DESIGN & MAINTENANCE
WALDWICK, NJ

201 **447-9480**



Mary Ellen O'Connell
Broker Associate
201.788.1169 (C)
moconnell@toocr.com



Gina Diaz
Sales Associate
201.694.1216 (C)
gdiaz@toocr.com



Mary Beth Nappi
Sales Associate
201.693.7841 (C)
mnappi@toocr.com

TERRIE O'CONNOR
REALTORS
-The Liberty Group-

*Your Waldwick Neighbor -
Your Trusted Realtor!*

201.825.0500 | TOCR.COM
75 W. ALLENDALE AVE ALLENDALE, NJ 07401

2025 HYDRANT FLUSHING SCHEDULE

The Water Department will perform a town-wide flushing program in the Spring (April through early May) and in the Fall (September through early October).

Please note, **flushing will take place overnight from 10:00pm - 5:00am, Monday-Friday** to limit disturbances to residents during this time.

Residents may experience some discoloration in their water, which is a result of the settling of naturally found minerals in water. **The remedy is to let the water run for a short time to clear up.**

**Please note, this schedule is subject to change due to weather and timing constraints. If you experience any issues, please call 201-652-5300 ext. 204*



SPRING SCHEDULE

Voting district	Dates
4 & 6	3/31 - 4/4
6	4/7 - 4/9
2	4/10-11, 4/14-16
1	4/17, 4/21-24
5	4/25, 4/28-30
3	5/1-2, 5/5-6

FALL SCHEDULE

Voting district	Dates
3	9/2 - 9/4
5	9/5, 9/8-10
1	9/11-12, 9/15-17
2	9/18-19, 9/22-24
6	9/25-26, 9/29-30
4 & 6	10/1-3, 10/6

Waldwick Golden Club

Psst...
Seniors!

Looking for a club that's all about fun, friends, and adventure? Check out the Waldwick Golden Club! They've got a whole slew of activities, events, and programs tailored to folks aged 55 and up. From casual hangouts to game days and gentle aerobic workouts, there's something for everyone. And, don't forget the special luncheons for the festive season!

Meetings happen twice a month from January to October, so no excuses on missing out on the fun. Plus, members can join in on extracurricular activities like day trips and picnics. Ready to join the party? Contact Dave Barthold at 201-481-1572 for more details.



TAX & WATER

Property Tax and Water bills are due four times a year – February 1, May 1, August 1 and November 1. The Borough offers taxpayers a 10-day grace period; after that, interest is assessed back to the first day of the due date.

Tax and Water payments can be mailed to Waldwick Borough Hall, PO Box 65, Waldwick, NJ 07463 or placed in the drop box located outside of the Administration building. Taxes and/or Water may also be paid online, www.waldwicknj.gov under Online Payments. Cash payments may be made for exact payment amounts. No change can be issued.

Online Checking: If you use your own banks online bill pay system, please make sure that you have your account number or block and lot number in the memo section. Allow for extra time when making this payment. Your check is mailed to us by your bank.

Checks: To avoid having your check returned due to errors and causing a delay that may cause interest charged for late payments, follow these instructions:

- Make checks payable to Borough of Waldwick.
- Make sure that the written amount matches the numerical amount.
- Make sure that the check is signed.
- Place block and lot numbers or the account number in the memo section of the check.

ACH Withdrawal Program: The Borough of Waldwick is now accepting tax and/or water payments via automatic withdrawal from your checking or savings account. This service assures your payment will be received in a timely manner. Funds are withdrawn on the last day of the 10-day grace period. There is no fee for this service.

If you are interested in this convenient payment method, submit a completed enrollment/authorization form along with a voided check. You can download the Bank Draft Program form from our website, www.waldwicknj.gov, under Forms. Otherwise, call our Tax and Water Department for assistance.

CFO/Tax Collector/Water Agent,
Colleen Ennis

201-652-5300 x244

cennis@waldwicknj.gov

Tax Office, Cynthia Johnson

201-652-5300 x239

cjohnson@waldwicknj.gov

Water Billing, Denise Broderick

201-652-5300 x240

dbroderick@waldwicknj.gov

For up-to-date information visit the Water Department website www.waldwicknj.gov/departments/water. To report water quality issues, please contact Borough Administrator Steven Neale, ext. 227, sneale@waldwicknj.gov

Sunday	Monday	Tuesday	Wednesday	Thursday	Friday	Saturday
<p>April</p> <p>S M T W T F S</p> <p>1 2 3 4 5 6</p> <p>7 8 9 10 11 12 13</p> <p>14 15 16 17 18 19 20</p> <p>21 22 23 24 25 26 27</p> <p>28 29 30</p>	<p>June</p> <p>S M T W T F S</p> <p>2 3 4 5 6 7 8</p> <p>9 10 11 12 13 14 15</p> <p>16 17 18 19 20 21 22</p> <p>23 24 25 26 27 28 29</p> <p>30</p>			1	2	3
4	5	6	7	8	9	10
<p>Chamber of Commerce 5k Run / 1 Mile Walk 9:00am</p>	<p>Heavy Metal Pickup Schedule by April 30</p>		<p>Recycling Collection Commingled Containers</p>	<p>Tax & Water Payments Due</p>		
<p>Mother's Day</p>	11	12	13	14	15	16
	<p>Last day to pay Taxes & Water without interest</p>	<p>Borough Council Meeting 7:30pm • Administrative Building</p>	<p>Recycling Collection Cardboard/Mixed Paper</p>	<p>Bulk Collection Schedule by May 9</p>		
18	19	20	21	22	23	24
	<p>Electronics Pickup Schedule by May 14</p>		<p>Recycling Collection Commingled Containers</p>			<p>Pool Opening Day 10:00am - 7:00pm Weekends/Holidays only RECYCLING CENTER CLOSED</p>
25	<p>Memorial Day</p> <p>Memorial Day Parade & Service 10:00am</p> <p>BOROUGH OFFICES & RECYCLING CENTER CLOSED</p> <p>Library Closed</p>	26	27	28	29	30
		<p>Borough Council Meeting 7:30pm • Administrative Building</p>	<p>Recycling Collection Cardboard/Mixed Paper</p>			

Police (201) 652-5700 • Emergency 911

RICHARD J. BRADY, ESQ.
 REAL ESTATE • WILLS • ESTATES

201-652-6521 • rbrady@richardjbradylaw.com
 112 Franklin Turnpike, Waldwick NJ

THE W5K/1 MILE WALK
 17 Year Anniversary hosted by the
 Waldwick Chamber of Commerce scheduled for May 4, 2025.
“May the fourth be with you”
 For additional information please visit Waldwick5k.com

MUNICIPAL CLERK'S OFFICE

Kelley Halewicz, RMC/CMC, Municipal Clerk
(ext. 236) khalewicz@waldwicknj.gov

Melissa Librizzi, Clerk 1
(ext. 238) mlibrizzi@waldwicknj.gov

ELECTION INFORMATION

Voter Eligibility: United States Citizen, at least 17 years old, though you may not vote until you have reached the age of 18 and resident of county for 30 days before the election.

Change of Party Affiliation Declaration Forms for Primary Election: Must be filed with the County Commissioner of Registration no later than 55 days before the Primary Election.



Primary Election: First Tuesday after the first Monday in June.
**Please note the 2025 Primary Election was changed by NJ State Legislature.*

General Election: First Tuesday after the first Monday in November.

Visit our website waldwicknj.gov/Elections for all voter information and forms including District listing by street, Vote by Mail application, Vote by Mail Removal form, Voter Registration form.

POLLING LOCATIONS

All polling locations are handicap accessible

District 1 - Borough Hall
2nd Floor Council Chambers
63 Franklin Turnpike

District 4 - Waldwick Senior Center
2nd Floor Ambulance Corps Bldg.
20 Whites Lane

District 2 - Borough Hall
2nd Floor, Council Chambers
63 Franklin Turnpike

District 5 - Waldwick Public Library
Community Room
19 E. Prospect Street

District 3 - Waldwick Public Library
Community Room
19 E. Prospect Street

District 6 - Waldwick Senior Center
2nd Floor Ambulance Corps Bldg.
20 Whites Lane

BALLOT DROP BOX LOCATION

The Borough has a secure **Vote by Mail Ballot Drop Box** located at **19 E. Prospect Street** behind the **Public Safety Complex** which can be accessed using the roadway entrance to the Waldwick Public Library. The Clerk's office cannot accept Vote by Mail Ballots for voters. For a complete list of secure Bergen County Vote by Mail Drop Boxes visit: <https://www.co.bergen.nj.us/board-of-elections/ballot-dropbox-locations>.



ALARM REGISTRATION

All residential and business alarms must be registered with the Borough every year by March 1. Failure to register an alarm may result in a summons being issued by the Police Department. New alarm registrations must be paid in person or by mail. Renewals can be paid using our online system.

YARD/GARAGE SALES

A permit is required to hold a garage sale in Waldwick. Garage Sale Permits are available for \$10.00 in the Clerk's office. Each household is allowed (2) two permits per year for sales that can be held for (3) three consecutive days.



LANDLORD/TENANT REGISTRATION – N.J.S.A. 46:8-28

Every landlord who owns a residential building (one-dwelling unit rental or two-dwelling unit non-owner-occupied premises) in which rent is received, shall file a Landlord/Tenant Registration form along with \$30 fee with the Municipal Clerk no later than April 1 each year. Any change in tenants requires a new registration form AND a Certificate of Compliance inspection. Also, for homes built prior to 1978, there are Lead Paint Inspection requirements. The form is on our website under Forms - Tenant Registration Form.

NOISE ORDINANCE REMINDER

Please be aware that the use of radio or television receiving sets, musical instruments, phonographs or any other machine or device for the producing or reproducing of sound is prohibited on weeknights between the hours of 10:00 pm and 7:00 am and on weekends and holidays 11:00 pm and 7:00 am.

The erection (including excavating), demolition, alteration or repair of any building between the hours of 9:00 pm and 7:00 am.

Lawn mowers, chain saws, and other equipment powered by internal-combustion engines are prohibited between the hours 9:00 pm and 7:00 am. Monday through Friday, and between the hours of 9:00 pm and 8:30 am weekends and holidays.

Sunday	Monday	Tuesday	Wednesday	Thursday	Friday	Saturday																																																																																					
1	2	3	4	5	6	7																																																																																					
	Heavy Metal Pickup Schedule by May 28		Recycling Collection Commingled Containers																																																																																								
8	9	10	11	12	13	14																																																																																					
Waldwick Community Alliance Car Show 9:30am - 3:00pm • Raindate June 15		Primary Election Day* Polls open 6:00am - 8:00pm	Recycling Collection Cardboard/Mixed Paper			Flag Day																																																																																					
Father's Day 15	16	17	18	Juneteenth 19	20	21																																																																																					
	Electronics Pickup Schedule by June 11	Borough Council Meeting 7:30pm • Administrative Building	Recycling Collection Commingled Containers	Bulk Collection Schedule by June 13	Summer Begins																																																																																						
22	23	24	25	26	27	28																																																																																					
			Recycling Collection Cardboard/Mixed Paper																																																																																								
	30				<p>May</p> <table border="1"> <tr><td>S</td><td>M</td><td>T</td><td>W</td><td>T</td><td>F</td><td>S</td></tr> <tr><td></td><td></td><td></td><td>1</td><td>2</td><td>3</td><td></td></tr> <tr><td>4</td><td>5</td><td>6</td><td>7</td><td>8</td><td>9</td><td>10</td></tr> <tr><td>11</td><td>12</td><td>13</td><td>14</td><td>15</td><td>16</td><td>17</td></tr> <tr><td>18</td><td>19</td><td>20</td><td>21</td><td>22</td><td>23</td><td>24</td></tr> <tr><td>25</td><td>26</td><td>27</td><td>28</td><td>29</td><td>30</td><td>31</td></tr> </table>	S	M	T	W	T	F	S				1	2	3		4	5	6	7	8	9	10	11	12	13	14	15	16	17	18	19	20	21	22	23	24	25	26	27	28	29	30	31	<p>July</p> <table border="1"> <tr><td>S</td><td>M</td><td>T</td><td>W</td><td>T</td><td>F</td><td>S</td></tr> <tr><td></td><td></td><td></td><td>1</td><td>2</td><td>3</td><td>4</td><td>5</td></tr> <tr><td>6</td><td>7</td><td>8</td><td>9</td><td>10</td><td>11</td><td>12</td></tr> <tr><td>13</td><td>14</td><td>15</td><td>16</td><td>17</td><td>18</td><td>19</td></tr> <tr><td>20</td><td>21</td><td>22</td><td>23</td><td>24</td><td>25</td><td>26</td></tr> <tr><td>27</td><td>28</td><td>29</td><td>30</td><td>31</td><td></td><td></td></tr> </table>	S	M	T	W	T	F	S				1	2	3	4	5	6	7	8	9	10	11	12	13	14	15	16	17	18	19	20	21	22	23	24	25	26	27	28	29	30	31		
S	M	T	W	T	F	S																																																																																					
			1	2	3																																																																																						
4	5	6	7	8	9	10																																																																																					
11	12	13	14	15	16	17																																																																																					
18	19	20	21	22	23	24																																																																																					
25	26	27	28	29	30	31																																																																																					
S	M	T	W	T	F	S																																																																																					
			1	2	3	4	5																																																																																				
6	7	8	9	10	11	12																																																																																					
13	14	15	16	17	18	19																																																																																					
20	21	22	23	24	25	26																																																																																					
27	28	29	30	31																																																																																							

Police (201) 652-5700 • Emergency 911



Bancroft Dobrin Orthodontics
Braces and Invisalign for children and adults

FREE CONSULTATIONS!
 201-447-1611
www.BDOOrthodontics.com



BOSWELL
 ENGINEERED FOR LIFE

330 Phillips Ave., South Hackensack, NJ 07606 www.boswellengineering.com

WALDWICK HEALTH SERVICES

Northwest Bergen Regional Health Commission (NWBRHC)

201-445-7217 • www.nwbrhc.org

Dr. Namitha Reddy, Health Officer

Vital Statistics - Birth, Marriage and Death Certificates

Contact Carmen Nist, Registrar or Corinne Woodward, Deputy Registrar



The Northwest Bergen Regional Health Commission (NWBRHC) was organized in 1957 and serves as our Health Department. NWBRHC's mission is to provide professional and efficient public health and environmental services to the residents of the communities they serve. With guidance through state-mandated public health practice standards and local ordinances of the Waldwick Board of Health, NWBRHC protects and promotes the public's health by using health promotion and education, disease prevention, environmental enforcement, and inspection activities.

ADULT HEALTH CLINIC

The Adult Health Clinic is scheduled by appointment only. Please call 201-445-7217 to schedule an appointment.

WELL CHILD CARE FOR INFANTS & CHILDREN

Well Child Care is for infants and children who are uninsured or who have New Jersey Family Care A and is offered the **third Wednesday of each month**. This service includes physical exams for school-aged children, immunizations, Mantoux testing, nutritional information, referrals and community resources. Please call 201-291-6147 or 201-291-6337 to schedule an appointment.

COMMUNITY MEALS REALLY DELIVERS

Community Meals, Inc., is a private non-profit service organization that delivers nutritious meals (one hot meal and one cold meal per day) to those who are ill or disabled, even temporarily and who are unable to prepare or obtain meals for themselves qualify for this service. Meals are delivered by volunteers Monday - Friday, excluding holidays between 11:30 am and 12:30 pm.

Community Meals, Inc., is located at the Community Church of Glen Rock, 354 Rock Road, Glen Rock NJ. For more information call 201-447-8295.

RENEW YOUR DOG LICENSE(S)

Dog license(s) should be renewed during the month of January. There shall be a \$10.00 per dog late fee assessed on July 1 to owners of dog(s) whose rabies vaccination(s) expired between January 1 and June 30 of the licensing year and failed to obtain a license for the current year.

For those dog(s) whose rabies vaccination(s) expire between July 1 and October 31, a late fee of \$10.00 per dog shall be assessed to the owner for failure to provide proof of rabies vaccination by the end of the month in which the rabies vaccination(s) is due in the licensing year.

RENEWAL

If you are renewing your dog license(s) and the rabies vaccination is still valid, kindly return the bottom portion of the invoice with your check made payable to the Borough of Waldwick in person, by mail or drop box located outside of the Administration Building along the pedestrian corridor.

If you are renewing your dog license(s) but are required to provide proof of valid rabies vaccination, same procedure as above but also include a copy of the valid rabies vaccination.

NEW LICENSE

If you are new to town or have a new dog(s), complete the Dog License Application, include copy of proof of spay/neuter certificate and a copy of proof of valid rabies vaccination along a check payable to the Borough of Waldwick in person, by mail or drop box located outside of the Administration Building along the pedestrian corridor. The fee is \$15 for spayed/neutered dogs and \$18 for non-spayed/non-neutered dogs.

If your dog(s) are no longer at your address, please call 201-652-5300 ext. 238 and we will update our records. 2025 dog(s) license(s) will be ready for pickup only at the Clerk's office.



WALDWICK
PROUD TO BE
STIGMA-FREE

Sunday	Monday	Tuesday	Wednesday	Thursday	Friday	Saturday																																																																																											
		1	2	3	Independence Day 4	5																																																																																											
			Recycling Collection Commingled Containers		BOROUGH OFFICES & RECYCLING CENTER CLOSED Library Closed	RECYCLING CENTER CLOSED																																																																																											
6	7	8	9	10	11	12																																																																																											
	Heavy Metal Pickup Schedule by July 2		Recycling Collection Cardboard/Mixed Paper			Borough Waste Disposal Day 9:00am - 3:00pm • Rain or shine																																																																																											
13	14	15	16	17	18	19																																																																																											
		Borough Council Meeting 7:30pm • Administrative Building	Recycling Collection Commingled Containers	Bulk Collection Schedule by July 11																																																																																													
20	21	22	23	24	25	26																																																																																											
	Electronics Pickup Schedule by July 16		Recycling Collection Cardboard/Mixed Paper			Styrofoam Recycling Collection 9:00am - 1:00pm																																																																																											
27	28	29	30	31	<p>June</p> <table border="1"> <tr><td>S</td><td>M</td><td>T</td><td>W</td><td>T</td><td>F</td><td>S</td></tr> <tr><td>1</td><td>2</td><td>3</td><td>4</td><td>5</td><td>6</td><td>7</td></tr> <tr><td>8</td><td>9</td><td>10</td><td>11</td><td>12</td><td>13</td><td>14</td></tr> <tr><td>15</td><td>16</td><td>17</td><td>18</td><td>19</td><td>20</td><td>21</td></tr> <tr><td>22</td><td>23</td><td>24</td><td>25</td><td>26</td><td>27</td><td>28</td></tr> <tr><td>29</td><td>30</td><td></td><td></td><td></td><td></td><td></td></tr> </table>	S	M	T	W	T	F	S	1	2	3	4	5	6	7	8	9	10	11	12	13	14	15	16	17	18	19	20	21	22	23	24	25	26	27	28	29	30						<p>August</p> <table border="1"> <tr><td>S</td><td>M</td><td>T</td><td>W</td><td>T</td><td>F</td><td>S</td></tr> <tr><td></td><td></td><td></td><td></td><td></td><td></td><td>1 2</td></tr> <tr><td>3</td><td>4</td><td>5</td><td>6</td><td>7</td><td>8</td><td>9</td></tr> <tr><td>10</td><td>11</td><td>12</td><td>13</td><td>14</td><td>15</td><td>16</td></tr> <tr><td>17</td><td>18</td><td>19</td><td>20</td><td>21</td><td>22</td><td>23</td></tr> <tr><td>24</td><td>25</td><td>26</td><td>27</td><td>28</td><td>29</td><td>30</td></tr> <tr><td></td><td></td><td></td><td></td><td></td><td></td><td>31</td></tr> </table>	S	M	T	W	T	F	S							1 2	3	4	5	6	7	8	9	10	11	12	13	14	15	16	17	18	19	20	21	22	23	24	25	26	27	28	29	30							31
S	M	T	W	T	F	S																																																																																											
1	2	3	4	5	6	7																																																																																											
8	9	10	11	12	13	14																																																																																											
15	16	17	18	19	20	21																																																																																											
22	23	24	25	26	27	28																																																																																											
29	30																																																																																																
S	M	T	W	T	F	S																																																																																											
						1 2																																																																																											
3	4	5	6	7	8	9																																																																																											
10	11	12	13	14	15	16																																																																																											
17	18	19	20	21	22	23																																																																																											
24	25	26	27	28	29	30																																																																																											
						31																																																																																											
			Recycling Collection Commingled Containers																																																																																														

Police (201) 652-5700 • Emergency 911



Need a lawyer? Call Craig!

Craig P. Bossong, Esq.
Partner, Florio Perrucci Steinhardt Cappelli & Tipton, LLC
(201) 373-8933
cbossong@floriolaw.com

**FLORIO
PERRUCCI**

**STEINHARDT
CAPPELLI &
TIPTON LLC**

www.floriolaw.com



TERMINAL
CONSTRUCTION CORPORATION

Donald N. Dinallo, President & CEO
215 State Highway 17S, Wood-Ridge, NJ 07075
201-939-9150 201-939-4745 Fax

BUILDING DEPARTMENT

Joseph Mysliwec, Construction/Zoning Official

(ext. 233) jmysliwec@waldwicknj.gov

Nancy Koch, T.A.C.O.

(ext. 232) nkoch@waldwicknj.gov



The Building Department includes administration and enforcement of zoning, building and other codes as well as property maintenance. Within the Building Department, the Waldwick Construction Official enforces the New Jersey State Uniform Construction Code (UCC).

WHEN WILL I NEED A BUILDING PERMIT?

You must obtain a building permit from the Borough's Building Department before making the following changes to your house. If your project is not included on the list and you are unsure if a building or zoning permit is required, please contact the Building Department.

Any job with an * requires Zoning Board Review

Large Construction Jobs

- Building an addition *
- Building a new bedroom or bathroom *
- Building a garage, attached or detached *
- Finishing a basement *
- Enclosing a porch, new porch *
- Constructing a deck *
- Installing an in-ground or above ground pool *
- Constructing a retaining wall that is 48" or higher

Small Construction Jobs

- Interior alterations
- Installing central air conditioning
- Installing a fireplace, gas or wood burning
- Installing ductwork
- Installing or building a shed larger than 200 square feet *
- New wiring or outlets
- Renovating a bathroom or kitchen
- Installing an underground sprinkler system
- Front entrance covering

TIP:
When closing on a house, do not wait until the last minute to schedule the inspection – if the inspection fails, you will need to reapply, provide additional fees, schedule another inspection and consequently, the closing may be delayed.

- Removing or abandoning an oil tank
- Upgrading the electric service
- Installing driveway post lights
- Demolition of shed or building
- Installing a concrete patio *
- Installing new interior or exterior entry to house, garage or basement

Renovating or Replacing

- Replacing an underground sprinkler system only if replacing backflow preventer
- Rebuilding a Chimney
- Replacing an electric stove with a gas stove
- Replacing a furnace, boiler or hot water heater
- Replacing central air conditioning
- Modernizing plumbing

Zoning Permits

- Installing, replacing or building a shed
- Installing or replace a fence
- Enlarging or replacing a driveway

Engineering Permits

- Any work within the public right-of-way
- Creating additional off-street parking
- Piping leaders to seepage pits or storm sewers
- Curb cutting
- Replacing sidewalks and curbs; installing new sidewalk and curbs – No permit is needed, but an inspection of curb form is required prior to construction

All permit applications may be picked up at Borough Hall or are available online at <https://www.nj.gov/dca/divisions/codes/resources/constructionpermitforms.html>

All permits require F100 form.

CERTIFICATE OF COMPLIANCE (COC) - State law requires an inspection of the smoke alarm(s), carbon monoxide alarm(s) and portable fire extinguisher(s) **before the sale, transfer or rental** of residential property can occur. N.J.A.C. 5:70-4.19. See Borough website for details.

EFFECTIVE SEPTEMBER 10, 2024

Ordinance No. 2024-#27 was adopted to Regulate the Removal and Replacement of Trees in the Borough of Waldwick.

No tree shall be removed/cut down without first obtaining a Tree Removal & Replacement Permit. The Tree Removal & Replacement Permit Application can be found on the Borough's website.

For questions regarding Tree Removal permits, please contact the Building Department.



WALDWICK POLICE DEPARTMENT

Emergency 911 • Non-Emergency 201-652-5700

The Waldwick Police Department consists of 21 sworn police officers and five civilian communications officers. The Waldwick Police Department is staffed 24 hours a day, 7 days a week and respond to close to 14,000 service calls a year.

Waldwick Police Officers are assigned to the Bergen County Regional SWAT Team and the Bergen County Rapid Deployment Teams. Police Officers hold specialized certifications as Emergency Medical Technicians, Child Seat Installation, Traffic Accident Investigation, Drug Recognition and Computer Crimes.

COMMUNITY OUTREACH PROGRAMS

L.E.A.D. - Law Enforcement Against Drugs & Violence program taught by police officers to fifth graders instructs children on how to resist peer pressure and live drug and violence free lives.

Junior Police Academy - offered to students entering the 6th grade, educates the participants on the various facets of criminal law, procedure and enforcement. The program includes both theoretical and practical lessons in a variety of areas. There are several off-site trips to law enforcement-related venues.

Law Enforcement Torch Run - raising money for Special Olympics through a special event of running and passing the torch to other police departments.

Police Unity Tour - a 300-mile bike ride to raise awareness for police officers who have been lost in the line of duty, and to support their families.

Warrior Night Out - a night set aside to where the community comes together to meet local first responders.

OPERATION REASSURANCE PROGRAM

The Waldwick Police Department's Operation Reassurance Program is one of the most successful in the area. This program is open to all Waldwick residents 55 and older. The program requires the participant to call into Police headquarters by a prearranged time each day. If the individual fails to call, a Communications Officer will try to make contact with that person. If there is no answer, a Police Officer will be dispatched to check on the welfare of that person. If you are interested in participating in this program, please call Police headquarters at 201-652-5700.

PROJECT MEDICINE DROP

Waldwick Police Department is a participating location for the Project Medicine Drop initiative. Please join our effort to halt the abuse and diversion of prescription drugs. Residents may dispose of unused and expired medications anonymously, 7 days a week, 365 days a year, at the Project Medicine Drop box located within police headquarters.



WALDWICK COMMUNITY EMERGENCY RESPONSE TEAM (CERT)

The resident volunteer team trained in basic emergency skills to respond to emergency situations in the community. CERT members can give critical support to first responders, provide immediate assistance to victims and organize volunteers at a disaster site. For more information, contact CERT Coordinator Jean Paras at 201-481-3333.



Sunday	Monday	Tuesday	Wednesday	Thursday	Friday	Saturday																																																																																																		
	Labor Day 1 BOROUGH OFFICES & RECYCLING CENTER CLOSED Library Closed	2	3 Recycling Collection Cardboard/Mixed Paper	4	5	6																																																																																																		
7	8 Heavy Metal Pickup* Schedule by September 3	9 Borough Council Meeting 7:30pm • Administrative Building	10 Recycling Collection Commingled Containers	Patriot Day 11	12	13																																																																																																		
14	15 Electronics Pickup Schedule by September 10	16	17 Recycling Collection Cardboard/Mixed Paper	18 Bulk Collection Schedule by September 12	19	20																																																																																																		
21	22 Autumn Begins	Rosh Hashanah begins at sundown 23	24 Recycling Collection Commingled Containers	25	26	27 Styrofoam Recycling Collection 9:00am - 1:00pm																																																																																																		
28	29	30 Borough Council Meeting 7:30pm • Administrative Building			<p style="text-align: center;">August</p> <table border="0" style="width: 100%; text-align: center;"> <tr><td>S</td><td>M</td><td>T</td><td>W</td><td>T</td><td>F</td><td>S</td></tr> <tr><td></td><td></td><td></td><td></td><td></td><td>1</td><td>2</td></tr> <tr><td>3</td><td>4</td><td>5</td><td>6</td><td>7</td><td>8</td><td>9</td></tr> <tr><td>10</td><td>11</td><td>12</td><td>13</td><td>14</td><td>15</td><td>16</td></tr> <tr><td>17</td><td>18</td><td>19</td><td>20</td><td>21</td><td>22</td><td>23</td></tr> <tr><td>24</td><td>25</td><td>26</td><td>27</td><td>28</td><td>29</td><td>30</td></tr> <tr><td></td><td></td><td></td><td></td><td></td><td></td><td>31</td></tr> </table>	S	M	T	W	T	F	S						1	2	3	4	5	6	7	8	9	10	11	12	13	14	15	16	17	18	19	20	21	22	23	24	25	26	27	28	29	30							31	<p style="text-align: center;">October</p> <table border="0" style="width: 100%; text-align: center;"> <tr><td>S</td><td>M</td><td>T</td><td>W</td><td>T</td><td>F</td><td>S</td></tr> <tr><td></td><td></td><td></td><td></td><td></td><td>1</td><td>2</td></tr> <tr><td>3</td><td>4</td><td>5</td><td>6</td><td>7</td><td>8</td><td>9</td></tr> <tr><td>10</td><td>11</td><td>12</td><td>13</td><td>14</td><td>15</td><td>16</td></tr> <tr><td>17</td><td>18</td><td>19</td><td>20</td><td>21</td><td>22</td><td>23</td></tr> <tr><td>24</td><td>25</td><td>26</td><td>27</td><td>28</td><td>29</td><td>30</td></tr> <tr><td></td><td></td><td></td><td></td><td></td><td></td><td>31</td></tr> </table>	S	M	T	W	T	F	S						1	2	3	4	5	6	7	8	9	10	11	12	13	14	15	16	17	18	19	20	21	22	23	24	25	26	27	28	29	30							31
S	M	T	W	T	F	S																																																																																																		
					1	2																																																																																																		
3	4	5	6	7	8	9																																																																																																		
10	11	12	13	14	15	16																																																																																																		
17	18	19	20	21	22	23																																																																																																		
24	25	26	27	28	29	30																																																																																																		
						31																																																																																																		
S	M	T	W	T	F	S																																																																																																		
					1	2																																																																																																		
3	4	5	6	7	8	9																																																																																																		
10	11	12	13	14	15	16																																																																																																		
17	18	19	20	21	22	23																																																																																																		
24	25	26	27	28	29	30																																																																																																		
						31																																																																																																		

Police (201) 652-5700 • Emergency 911




CHRISTIE'S

INTERNATIONAL REAL ESTATE - NORTHERN NEW JERSEY

JoAnne Basile, GRI
Realtor-Associate®
201-410-4826 Cell
201-904-2085 Office
joanneb804@aol.com

David P. Barthold
Realtor-Associate®
201-481-1572 Cell
201-904-2085 Office
njrebart@aol.com

Bartold-BasileTeam.com



The FORUM SCHOOL

Est. 1954

Believe • Celebrate • Succeed

107 Wyckoff Avenue
Waldwick, NJ 07463

201-444-5882

**Serving Atypical Children
and Their Families**
For Over Seventy Years

WALDWICK VOLUNTEER FIRE DEPARTMENT

15 East Prospect Street, Waldwick, NJ 07463
(201) 652-7565

A 501(c)(6) non-profit
INCORPORATED IN 1907



Each year we respond
to over **250** calls
for service



Proudly Serving Waldwick for 118 Years

The men and women of the Waldwick Fire Department are always looking for new members!

We are regular people with families, careers and lives who chose to protect our neighbors when called upon. We are in need of members to continue this tradition of service to our community.

No previous training or experience is required to join; just a positive attitude and willingness to learn. All necessary training and proper personal protection equipment will be provided upon joining.

If you are between the ages of 16 and 18, you are eligible to join our Junior Program. Anyone 18 years and older are eligible to join the active crew upon completion of your training. An application and town paid physical are required. Come by Company #1 (15 East Prospect Street) any Thursday night at 7:30pm to meet our members.



Facebook and Instagram



@waldwickfiredepartment

2025 Department Officers

Chief Andrew Agugliaro
Asst. Chief Michael Ferrera
Captain Dave Guy
Captain Matt Amos
Lieutenant Chris Moses

2025 Executive Officers

President Christina Agugliaro
Vice President Keith Hockenbeck
Treasurer Jim O'Connell
Secretary Derrick Delgado



Sunday	Monday	Tuesday	Wednesday	Thursday	Friday	Saturday
September S M T W T F S 1 2 3 4 5 6 7 8 9 10 11 12 13 14 15 16 17 18 19 20 21 22 23 24 25 26 27 28 29 30	November S M T W T F S 1 2 3 4 5 6 7 8 9 10 11 12 13 14 15 16 17 18 19 20 21 22 23 24 25 26 27 28 29 30		1 Recycling Collection Cardboard/Mixed Paper	2 Yom Kippur begins at sundown	3	4
5	6 Heavy Metal Pickup Schedule by October 1	7	8	9	10	11
12	Columbus Day BOROUGH OFFICES & RECYCLING CENTER CLOSED Library Closed	13	14	15	16	17
19	20	21	22	23	24	25
26	27	28	29	30	31	
	Electronics Pickup Schedule by October 15	Borough Council Meeting 7:30pm • Administrative Building	Recycling Collection Commingled Containers	District 4 Leaf Collection	WCA Ragamuffin Parade & Borough Trunk or Treat 10:00am • Raindate October 26	
	District 6 Leaf Collection	Borough Council Meeting 7:30pm • Administrative Building	Recycling Collection Cardboard/Mixed Paper	District 1 Leaf Collection	Halloween	

Police (201) 652-5700 • Emergency 911



**DOMESTIC-INTERNATIONAL
AIRLINE TICKETING**

- Cruise & Tour Reservations
- Euro Rail Ticketing | Group Travel
- Travel Insurance

71 Franklin Turnpike Suite 1-3 Waldwick NJ | 201.825.1600 | travel@primetravel.com



- Custom Exhaust
- State Inspection • Alignments
- Road Service • Towing



Serving the Public for Over 50 Years

Chuck Wanamaker



201-447-4635

25 W. Prospect Street • Waldwick

WALDWICK VOLUNTEER AMBULANCE CORPS

WALVAC

20 Whites Lane, Waldwick, NJ 07463

201-445-8772

www.walvac.org



Proudly Serving Waldwick since 1951

Since 1951, the Waldwick Volunteer Ambulance Corps has been a trusted provider of emergency medical care for the Borough of Waldwick and surrounding towns. From medical emergencies to ensuring safety at town events, fires, severe weather, and sports, our team stands ready to serve.

Originally founded by members of the American Legion, we proudly carry on their tradition of offering emergency care at no cost to Waldwick residents. As a private 501(c)(3) organization, we are solely funded by the generous donations of our community.



Waldwick Chamber of Commerce 5K Race

Ken Gurian, Kelly Martinez, Adrian Comayagua, Adrian Domaradsky, Madelin Benitez, Ashley Statuto, John Papendick, Esequiel Cortez

Wheelchairs, Crutches, and Walkers

WALVAC maintains an inventory of wheelchairs, walkers, canes, and crutches which are available free of charge to the residents of Waldwick. If you wish to donate gently used items to another resident, please contact us at the phone number listed above.

Make a Difference – Be the Difference

WALVAC is actively seeking new members to join our ranks as volunteer EMTs or drivers, with both day and night shifts available. No experience? No problem. All necessary training is provided, at no cost to members. Share your skills, learn new ones, and become part of an organization that directly aids your community, family, and friends. Visit www.walvac.org to learn more.



Memorial Day Parade & Ceremony

Loucas Nestoros, Adrian Domaradsky, Ashley Statuto, April Trainor, Madelin Benitez, John Papendick

A Tribute to John Papendick

Our WALVAC family mourns the loss of our President, John Papendick, who passed away suddenly in August 2024. John dedicated 11 years to WALVAC as a selfless leader and beloved family member, leaving an unforgettable impact on our community.

His kindness, humor, and warmth touched countless lives, making him a cherished presence to all who knew him. John's memory will forever remain in our hearts, and his legacy will continue to inspire us.



Sunday	Monday	Tuesday	Wednesday	Thursday	Friday	Saturday
<p>October</p> <p>S M T W T F S</p> <p>1 2 3 4</p> <p>5 6 7 8 9 10 11</p> <p>12 13 14 15 16 17 18</p> <p>19 20 21 22 23 24 25</p> <p>26 27 28 29 30 31</p>	<p>December</p> <p>S M T W T F S</p> <p>1 2 3 4 5 6</p> <p>7 8 9 10 11 12 13</p> <p>14 15 16 17 18 19 20</p> <p>21 22 23 24 25 26 27</p> <p>28 29 30 31</p>					<p>1</p> <p>Tax & Water Payments Due</p> <p>District 3 Leaf Collection</p>
<p>2</p> <p>Daylight Savings Time Ends</p> <p>Test your smoke alarms</p>	<p>3</p> <p>Heavy Metal Pickup</p> <p>Schedule by October 29</p>	<p>4</p> <p>General Election Day</p> <p>Polls open 6:00am - 8:00pm</p> <p>District 5 Leaf Collection</p>	<p>5</p> <p>Recycling Collection</p> <p>Commingled Containers</p>	<p>6</p> <p>Free Rabies Clinic</p> <p>6:00pm • DPW Garage</p>	<p>7</p> <p>District 1 Leaf Collection</p>	<p>8</p>
<p>9</p>	<p>10</p> <p>Last day to pay Taxes & Water without interest</p>	<p>11</p> <p>Veterans Day</p> <p>Veterans Day Parade & Service 11:00am</p> <p>BOROUGH OFFICES & RECYCLING CENTER CLOSED</p> <p>Library Open</p>	<p>12</p> <p>Recycling Collection</p> <p>Cardboard/Mixed Paper</p>	<p>13</p> <p>Borough Council Meeting</p> <p>7:30pm • Administrative Building</p>	<p>14</p> <p>District 2 Leaf Collection</p>	<p>15</p>
<p>16</p>	<p>17</p> <p>Electronics Pickup</p> <p>Schedule by November 12</p>	<p>18</p>	<p>19</p> <p>District 4 Leaf Collection</p> <p>Recycling Collection</p> <p>Commingled Containers</p>	<p>20</p> <p>Bulk Collection</p> <p>Schedule by November 14</p>	<p>21</p>	<p>22</p>
<p>23</p>	<p>24</p>	<p>25</p>	<p>26</p> <p>Library closes at 5:00pm</p> <p>Recycling Collection</p> <p>Cardboard/Mixed Paper</p>	<p>27</p> <p>Thanksgiving Day</p> <p>BOROUGH OFFICES & RECYCLING CENTER CLOSED</p> <p>No Garbage Collection</p> <p>Library Closed</p>	<p>28</p> <p>BOROUGH OFFICES & RECYCLING CENTER CLOSED</p> <p>Library Closed</p>	<p>29</p> <p>Recycling Center Open</p> <p>9:00am - 1:00pm</p>
<p>30</p> <p>District 6 Leaf Collection</p>		<p>Borough Council Meeting</p> <p>7:30pm • Administrative Building</p>				

Police (201) 652-5700 • Emergency 911

COMMERCIAL • RESIDENTIAL • MUNICIPAL



Family Owned & Operated since 1935

Dumpster and Roll Off Rentals | Convenient Pickups
Transfer Stations | Recycling | E-Waste
Confidential Document Shredding
& Hard Drive Destruction

SECOND TO NONE Call Us Now For A Free Estimate 973-278-6625

FAST PICKUPS we offer some of the quickest pickup times in the industry.
RECYCLING MORE decreases the volume of waste going to our local landfills.
RELIABLE TEAM our service and equipment is second to none.

www.gaetarecycling.com info@gaetarecycling.com

SERVING PASSAIC, BERGEN, MORRIS, SUSSEX, ESSEX, UNION, MIDDLESEX & HUDSON COUNTIES.




Mary Beth Nappi
Sales Associate
201.693.7841 (C)
mnappi@toocr.com



Gina Diaz
Sales Associate
201.694.1216 (C)
gdiaz@toocr.com

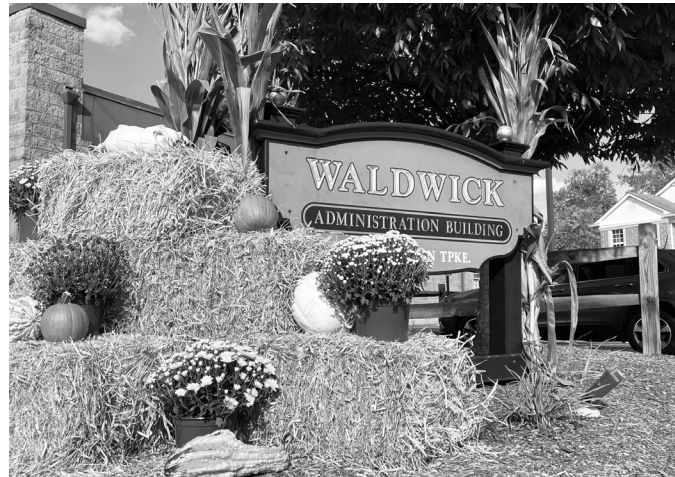


Mary Ellen O'Connell
Broker Associate
201.788.1169 (C)
moconnell@toocr.com

TERRIE O'CONNOR
REALTORS
-The Liberty Group-


Waldwick's Own -
Ready to Help You Make Your Move!

201.825.0500 | TOCR.COM
75 W. ALLENDALE AVE ALLENDALE, NJ 07401



Sunday	Monday	Tuesday	Wednesday	Thursday	Friday	Saturday																																																																																																		
	1 Heavy Metal Pickup Schedule by November 26	2 District 3 Leaf Collection	3 Recycling Collection Commingled Containers	4	5 Annual Christmas Tree Lighting 7:00pm District 5 Leaf Collection	6																																																																																																		
7	8	9	10 District 1 Leaf Collection Recycling Collection Cardboard/Mixed Paper	11	12	13																																																																																																		
Hanukkah Begins at sundown 14	15	16 District 2 Leaf Collection Borough Council Meeting 7:30pm • Administrative Building	17 Recycling Collection Commingled Containers	18 Bulk Collection Schedule by December 12	19 District 4 Leaf Collection District 6 Leaf Collection District 3 Leaf Collection	20																																																																																																		
Annual Menorah Lighting 4:30pm 21	22	23	Christmas Eve 24 BOROUGH OFFICES & RECYCLING CENTER CLOSED Library Closed Recycling Collection Cardboard/Mixed Paper	Christmas Day 25 BOROUGH OFFICES & RECYCLING CENTER CLOSED No Garbage Collection Library Closed	Kwanzaa Begins 26 BOROUGH OFFICES & RECYCLING CENTER CLOSED	27 RECYCLING CENTER CLOSED																																																																																																		
Winter Begins 28	29	30	New Year's Eve 31 Library closes at 5:00pm Recycling Collection Commingled Containers		<p>November</p> <table border="1"> <tr><td>S</td><td>M</td><td>T</td><td>W</td><td>T</td><td>F</td><td>S</td></tr> <tr><td></td><td></td><td></td><td></td><td></td><td></td><td>1</td></tr> <tr><td>2</td><td>3</td><td>4</td><td>5</td><td>6</td><td>7</td><td>8</td></tr> <tr><td>9</td><td>10</td><td>11</td><td>12</td><td>13</td><td>14</td><td>15</td></tr> <tr><td>16</td><td>17</td><td>18</td><td>19</td><td>20</td><td>21</td><td>22</td></tr> <tr><td>23</td><td>24</td><td>25</td><td>26</td><td>27</td><td>28</td><td>29</td></tr> <tr><td>30</td><td></td><td></td><td></td><td></td><td></td><td></td></tr> </table>	S	M	T	W	T	F	S							1	2	3	4	5	6	7	8	9	10	11	12	13	14	15	16	17	18	19	20	21	22	23	24	25	26	27	28	29	30							<p>January 2026</p> <table border="1"> <tr><td>S</td><td>M</td><td>T</td><td>W</td><td>T</td><td>F</td><td>S</td></tr> <tr><td></td><td></td><td></td><td></td><td></td><td></td><td>1</td></tr> <tr><td>2</td><td>3</td><td>4</td><td>5</td><td>6</td><td>7</td><td>8</td></tr> <tr><td>9</td><td>10</td><td>11</td><td>12</td><td>13</td><td>14</td><td>15</td></tr> <tr><td>16</td><td>17</td><td>18</td><td>19</td><td>20</td><td>21</td><td>22</td></tr> <tr><td>23</td><td>24</td><td>25</td><td>26</td><td>27</td><td>28</td><td>29</td></tr> <tr><td>30</td><td>31</td><td></td><td></td><td></td><td></td><td></td></tr> </table>	S	M	T	W	T	F	S							1	2	3	4	5	6	7	8	9	10	11	12	13	14	15	16	17	18	19	20	21	22	23	24	25	26	27	28	29	30	31					
S	M	T	W	T	F	S																																																																																																		
						1																																																																																																		
2	3	4	5	6	7	8																																																																																																		
9	10	11	12	13	14	15																																																																																																		
16	17	18	19	20	21	22																																																																																																		
23	24	25	26	27	28	29																																																																																																		
30																																																																																																								
S	M	T	W	T	F	S																																																																																																		
						1																																																																																																		
2	3	4	5	6	7	8																																																																																																		
9	10	11	12	13	14	15																																																																																																		
16	17	18	19	20	21	22																																																																																																		
23	24	25	26	27	28	29																																																																																																		
30	31																																																																																																							

Police (201) 652-5700 • Emergency 911



Frank Covelli fcovelli@planj.com
 Senior Vice President - Managing Director
 PUBLIC SECTOR INSURANCE AND RISK SERVICES
 429 Hackensack Street • P.O. Box 818 • Carlstadt, NJ 07072
 Direct: (201) 559-8134 • Phone: (201) 438-7500



Printing, Copying, Ideas and More...
Ridgewood PRESS.com
 Call: 201-670-9797 Fax: 201-670-9798
WE'RE JUST DOWN THE ROAD!

Color Printing & Copying!

- Digital & Offset Printing
- Digital Copying
- Posters, Banners & Signs
- Direct Mail Solutions
- Screen Printing & Embroidery

609 Franklin Turnpike • Ridgewood NJ 07450



Waldwick Recycling Guide



Place recyclables loose in cans. Cans must be water tight and have lids.

Recyclables in plastic bags will NOT be collected. Recycling must be curbside by 6:00am on scheduled pickup day.

COMMINGLED

- MUST be emptied and cleaned thoroughly -



Plastic Coded



Include caps & lids
(no corks)



Glass Bottles and Jars



Metal Containers and Foil



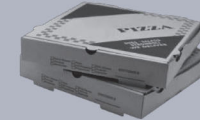
Cartons and Juice Boxes

CARDBOARD/MIXED PAPER

- NOTHING soiled with food -



Cardboard



Pizza Boxes
(must be EMPTY)



Paper



Paper Rolls



Paper Bags



Wrapping Paper



Greeting Cards



Household Boxes



Paperback & Phone Books



Mail
(plastic windows ok)



Newspapers, Magazines, Catalogs

These items do NOT go into Recycling

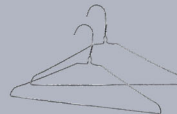
Please consider donating or bringing to an alternative recycling collection where available.



Paper Towels, Napkins, Tissues, Paper Plates, Paper Cups, Plastic Utensils, Straws
(Trash)



Snack Bags, Food Pouches
(Trash)



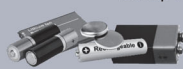
Metal Hangers
(Return to Dry Cleaner, bring to Scrap Metal bin)



Glass Drink-ware, Pyrex, Vases
(Donate or Trash)



Styrofoam
(Food & Drink Containers - Trash)
Packaging - Look For Local Recycling Drive



Alkaline Batteries
(Trash or Alternative Collection site)

Lithium-ion (Li-ion) batteries*
and devices containing these batteries should not go in household garbage or recycling bins.*

Bring to Waldwick Recycling Center



Plastic Bags & Soft Plastic



Scrap Metal



Electronics



Shredded Paper
put in mixed paper closed container at center

Recycling Center located at 19 Industrial Park

Recycling Center Hours:

Monday - Friday 7:30 am - 3:00 pm

Saturdays 9:00 am - 1:00 pm

*Li-ion batteries can cause fires during transport or at landfills and recyclers. Instead, they should be taken to a Bergen County Household Hazardous Waste Collection date: <https://www.bcua.org/>

Sunday	Monday	Tuesday	Wednesday	Thursday	Friday	Saturday
<p>December 2025</p> <p>S M T W T F S</p> <p>1 2 3 4 5 6</p> <p>7 8 9 10 11 12 13</p> <p>14 15 16 17 18 19 20</p> <p>21 22 23 24 25 26 27</p> <p>28 29 30 31</p>	<p>February 2026</p> <p>S M T W T F S</p> <p>1 2 3 4 5 6 7</p> <p>8 9 10 11 12 13 14</p> <p>15 16 17 18 19 20 21</p> <p>22 23 24 25 26 27 28</p>			<p>New Year's Day 1</p> <p>BOROUGH OFFICES & RECYCLING CENTER CLOSED Library Closed No Garbage Collection</p>	2	3
4	5	6	7	8	9	10
	<p>Heavy Metal Pickup Schedule by December 31</p> <p>Christmas Tree Pickup Franklin Tpke and West to Wyckoff</p>	<p>Christmas Tree Pickup East of Franklin Tpke to Saddle River</p>	<p>Recycling Collection Cardboard/Mixed Paper</p>			
11	12	13	14	15	16	17
	<p>Christmas Tree Pickup Franklin Tpke and West to Wyckoff</p>	<p>Christmas Tree Pickup East of Franklin Tpke to Saddle River</p>	<p>Recycling Collection Commingled Containers</p>	<p>Bulk Collection Schedule by January 9</p>		
18	<p>Martin Luther King Jr. Day</p> <p>19</p> <p>Electronics Pickup Schedule by January 14</p> <p>Christmas Tree Pickup Franklin Tpke and West to Wyckoff</p>	20	21	22	23	24
		<p>Christmas Tree Pickup East of Franklin Tpke to Saddle River</p>	<p>Recycling Collection Cardboard/Mixed Paper</p>			
25	26	27	28	29	30	31
			<p>Recycling Collection Commingled Containers</p>			

Police (201) 652-5700 • Emergency 911

GOVERNMENT DIRECTORY

5th Congressional District
Congressman Josh Gottheimer
gottheimer.house.gov

39th Legislative District
Senator Holly Shepisi
senschepisi@njleg.gov

Assemblyman Bob Auth
asmauth@njleg.gov

Assemblyman John Azzariti
asmAzzariti@njleg.gov



WALDWICK PUBLIC LIBRARY

Digital Waldwick Open 24/7 • (201) 652-5104

Lori-Ann Quinn, Director • quinn@waldwick.bccls.org

All of these excellent resources and much more are available for free to Waldwick residents with valid Waldwick Library cards. Visit www.waldwicklibrary.gov and remember, your friendly library staff is always happy to help you!



Digitized yearbooks, scrapbooks, newspapers and historical documents.

BCCLS

Download the BCCLS app to be sure you always have your Waldwick library card with you. Borrow eBooks, eAudiobooks, and search our catalog anytime with your digital Waldwick Library card!



Libby

Enjoy borrowing eBooks, eAudiobooks and over 250 popular and specialty magazine titles.



Hoopla

A digital collection of 200,000 streaming and downloadable audiobooks, music, TV shows, movies and graphic novels.



Kanopy

Stream a curated collection of movies and documentaries.



Consumer Reports

Enjoy a digital subscription to consumer reports and make your next big purchase with confidence. Ask us how to get started.



Game & Puzzle Library

Use your library card to borrow a puzzle or game from our new and growing collection! Games for all ages and interests are now available!



Digital access to The New York Times and the Wall Street Journal are available to patrons through our website.



Tumble Book Children's Library

Waldwick patrons now have access to the TumbleBookLibrary of over 250 animated ebooks for kids. Access read-along chapter books, non-fiction books, titles in Spanish and French and exciting games and puzzles.



Museum Passes

The Friends of the Library Museum Pass Program offers Waldwick Library cardholders free passes for the following institutions:
9/11 Memorial & Museum • Storm King Art Center
Intrepid Air, Sea & Space Museum
Museum of Natural History (\$5 per ticket)



Sign up for our newsletter!



PLANNING BOARD & ZONING BOARD

Joyce Sinclair, Secretary
(ext. 223) jsinclair@waldwicknj.gov

WALDWICK PLANNING BOARD

REGULAR MEETINGS, Wednesday. All meetings are open to the public and are held at 7:30 pm on the 2nd floor of the Waldwick Administration Building, 63 Franklin Turnpike, Waldwick.

<i>January 8</i>	<i>July 2</i>
<i>February 5</i>	<i>August 6</i>
<i>March 5</i>	<i>September 3</i>
<i>April 2</i>	<i>October 1</i>
<i>May 7</i>	<i>November 5</i>
<i>June 4</i>	<i>December 3</i>

WALDWICK ZONING BOARD OF ADJUSTMENT

REGULAR MEETINGS, Wednesday. All meetings are open to the public and are held at 8:00 pm on the 2nd floor of the Waldwick Administration Building, 63 Franklin Turnpike, Waldwick.

<i>January 22</i>	<i>July 23</i>
<i>February 26</i>	<i>August 27</i>
<i>March 26</i>	<i>September 24</i>
<i>April 23</i>	<i>October 22</i>
<i>May 28</i>	<i>November 12</i>
<i>June 25</i>	<i>December 10</i>

*Work Session Meetings and Special Meetings will be scheduled as needed in 2025 and noticed in accordance with the requirements of the Open Public Meetings Law c.231, P.L. 1975.

The Borough's website will remain the primary source of information for meeting schedules.

DOES YOUR HOME NEED REPAIRS?

The Mayor and Borough Council invite you to apply to the Borough of Waldwick's

HOME IMPROVEMENT PROGRAM

If you live in Waldwick, own your home, and your total gross annual household income falls below the income limit for your household size, you may qualify to participate in the program.

- There is **no cost to apply** and it does not affect your credit score.
- Funds are provided as a **no interest (0%) ten-year forgivable loan**.
- A **professional inspector** oversees the process.
- There is **no monthly payment**.

You can receive up to **\$23,000** in repairs!

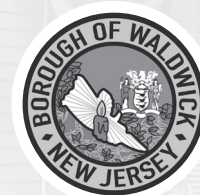
(income limits updated annually)

ELIGIBLE USES OF FUNDS INCLUDE		Household size				
<ul style="list-style-type: none">• <i>Roofs</i>• <i>Foundations</i>• <i>Heating</i>• <i>Electrical</i>	<ul style="list-style-type: none">• <i>Windows</i>• <i>Insulation</i>• <i>Plumbing</i>• <i>and more!</i>	1	2	3	4	
		Maximum Income	\$67,431	\$77,064	\$86,697	\$96,329
		Household size	5	6	7	8
		Maximum Income	\$104,036	\$111,742	\$119,449	\$127,155

**FIRST COME, FIRST SERVED
TAKE THE FIRST STEP!**

www.hip.cgph.net

Easily submit your preliminary application online!



This Program is sponsored by the Borough of Waldwick



If you have additional questions, or if you do not have internet access, call the Program Representative at (609) 664-2769 ext. 9. Funding also available for rental properties - Landlords to call for terms.

BOROUGH OF WALDWICK VOTING DISTRICTS

DISTRICT 1 - Borough Hall

Bergen Avenue
from Franklin Turnpike to Nordham Street
Calvin Place
Central Avenue
Centre Street
Cortlandt Street
Dora Avenue
from Franklin Turnpike to Nordham Street
East Prospect Street
from Franklin Turnpike to Nordham Street
Franklin Turnpike
*odd north of East Prospect Street,
even north of Wyckoff Avenue*
Frederick Street
Grand Avenue
Grove Street
from Franklin Turnpike to Nordham Street
Harrison Avenue
north of West Prospect Street
Hewson Avenue
Highwood Ave *to Nordham
Street*
Lincoln Place
from Franklin Turnpike to Nordham Street
Mackay Avenue
Moore Avenue
Nordham Street
even numbers
Park Avenue
Summit Avenue
Franklin Turnpike to Nordham Street
Waldwick Avenue
Franklin Turnpike to Nordham Street
Walter Nightengale Place
West Prospect Street
Hewson Avenue to Franklin Turnpike

DISTRICT 2 - Borough Hall

Alexander Avenue
Bohnert Place
Brady Street
Chopek Lane
Cleveland Avenue
Clinton Place
Crescent Ave
odd numbers north of Wyckoff Avenue
Darling Road
Gateway Court
Hopper Avenue
Idalane Street
Industrial Park
Irving Place
Lakeview Drive
Lilyan Street
Lindbergh Parkway
east of Crescent Avenue

Maple Avenue
Nallin Court
Oak Place
Pennington Avenue
Pine Street
Sarah Kathryn Way
Schuler Avenue
Sherman Avenue
Smith Street
Van Court
Vernon Court
Vine Street
Wagner Street
Wanamaker Avenue
West Prospect Street
between Crescent & Hewson Avenue
White Pond Road
William Demarest Place
Wyckoff Avenue
*odd numbers from Crescent Avenue
to Franklin Turnpike*
Yvonne Street
Zazzetti Street

DISTRICT 3 - Waldwick Public Library

Ackerman Street
Albert Place
Campbell Street
Charles Terrace
Donald Place
Douglass Street
Duncan Street
East Prospect Street
even numbers
Emmett Place
Franklin Turnpike
*even south of Wyckoff Avenue,
odd south of East Prospect Street*
Harrison Avenue
south of West Prospect Street
Howard Place
Hudson Avenue
under #70
Lafayette Place
Mac Beth Court
Mac Donald Court
Mac Dougal Court
Mac Gregor Court
Mac Laren Court
Malcolm Street
Maple Court
Phelan Court
Richard Drive
Ridge Street
Rustic Drive
Sheridan Avenue
south of East Prospect Street

Stuart Street
West Prospect Street
Hewson Avenue to Franklin Turnpike
Walter Hammond Place
Wayne Court
West Saddle River Road

DISTRICT 4 - Senior Center

Bender Road
Birch Lane
Cambra Road
Chestnut Place
Crescent Avenue
even numbers north of Wyckoff Avenue
Cypress Court
Dana Drive
DiPippo Court
Durante Road
Elm Court
Gibb Court
Hickory Lane
King Street
Lindbergh Parkway
west of Crescent Avenue
Lockwood Drive
Longview Court
Longview Drive
Lotus Lane
Lyon Road
Mary Lane
Masterson Court
Oakview Drive
Pineview Drive
Raffaele Place
Sycamore Drive
Tamaron Drive
Van Dyke Road
Waldmere Place
Warren Place
Willow Court
Wyckoff Avenue
odd numbers west of Crescent Avenue

DISTRICT 5 - Waldwick Public Library

Astor Place
Bergen Avenue
east of Nordham Street
Dora Avenue
east of Nordham Street
East Prospect Street
odd numbers east of Nordham St
Grove Street
east of Nordham St
Highwood Avenue
east of Nordham Street
Hudson Avenue
over #71

Lincoln Place
east of Nordham Street
Manhattan Avenue
Nordham Street
odd numbers
Park Place
Ridgewald Avenue
east of Nordham Street
Sheridan Avenue
north of East Prospect Street
Summit Avenue
east of Nordham Street
Waldwick Avenue
east of Nordham Street

DISTRICT 6 - Senior Center

Anthony Place
Barnes Drive
Beverly Lane
Brearly Crescent
Brookview Court
Cathy Lane
Cecelia Drive
Crescent Avenue
south of Wyckoff Avenue
Cyli Place
Dante Place
DeMartini Place
Derby Lane
Dow Avenue
Evergreen Street
Gerard Drive
Glenair Avenue
Hemlock Street
John Dow Avenue
Kennedy Drive
Lee Court
Leonard Drive
Monroe Street
Roberta Lane
Salrit Avenue
Scott Street
Smithfield Road
Smithfield Terrace
South Dow Avenue
Stevens Lane
Van Dan Place
Whites Lane
Wilda Lane
Wilson Terrace
Woodside Road
Wyckoff Avenue
even numbers

ADMINISTRATION BUILDING MAIN NUMBER • 201-652-5300

Administration

Administrator, Steven Neale 227
 Confidential Assistant, Tatiana Marquis 228
 Municipal Clerk, Kelley Halewicz 236
 Clerk 1, Melissa Librizzi 238

Animal Control – Tyco Municipal Animal Control Services LLC 201-652-4554

Building Department

Construction & Zoning Official, Joseph Mysliwiec 233
 Building Department Clerk/T.A.C.O., Nancy Koch 232
 Building Department fax 201-652-5483

Court - Mon 10:00am – 2:00pm, Tues 1:00pm – 4:00pm, Thurs 1:00pm – 4:00pm

Court Administrator, Christine Oravetz 221
 Court Clerk, Lorraine Cuomo 222
 Court fax 201-652-4657

Finance Department

CFO/Tax Collector/Water Agent, Colleen Ennis 244
 Accounts Payable, Rocio Carrion 242
 Payroll, April Banach 241
 Tax, Cynthia Johnson 239
 Water, Denise Broderick 240
 Finance Department fax 201-652-5483

Fire Department (Non-Emergency), 15 E. Prospect Street

Fire Department Fax 201-652-4389

Fire Prevention

Fire Official, Jim O'Connell 249

Health Department & Registrar of Vital Statistics

(Northwest Bergen Regional Health Commission) 201-445-7217

Health Center, 22 Whites Lane 201-445-7217 x201

Library

Library Fax 201-652-5104
 201-652-6233

Planning Board & Zoning Board

Secretary, Joyce Sinclair 223

Police Department (Non-Emergency)

Police Chief, Mark Messner 201-652-5700
 Police Department Fax 201-652-7638

Public Works Department

Superintendent, Michael LaTorre 201-652-5900

Tax Assessor, Angela Mattiace 225

Tax Assessor Assistant, Debbie Lyon 224

WALVAC (Volunteer Ambulance Corps), 20 Whites Lane 201-445-8772

Post Office, 1 Walter Hammond Place 201-447-3058

Waldwick Board of Education, 155 Summit Avenue

Crescent Elementary School, 165 Crescent Avenue 201-445-0690

Traphagen Elementary School, 153 Summit Avenue 201-445-0730

Waldwick Middle School, 155 Wyckoff Avenue 201-652-9000

Waldwick High School, 155 Wyckoff Avenue 201-652-9000

Senior Citizen Services

Waldwick Golden Club 201-481-1572

Bergen County Senior Services 201-336-7400

Bergen County Community Transportation 201-368-5955

Meals on Wheels 201-336-7420

Bergen County Services

Board of Elections 201-336-6230

County Clerk 201-336-7000

Passport 201-336-7000

Surrogate's Office 201-336-6700

Superintendent of Elections 201-336-6115

OFFICE HOURS

Administration, Tax & Water, Municipal Clerk, Building Department

Monday - Friday 8:30am - 4:00pm

Department of Public Works

Monday - Friday 7:00am - 3:30pm

Recycling Center, 19 Industrial Park

Monday – Friday 7:30am – 3:00pm

Saturdays 9:00am – 1:00pm

Tax Assessor

Thursday 9:00am - 1:00pm

WALDWICK WALL OF HEROES

Instituted by Mayor Tom Giordano and the Municipal Council, the Waldwick Wall of Heroes continues to honor deceased Waldwick Veterans by displaying their photo on the Waldwick Wall of Heroes located on the second floor of the Administration Building. Applications are available by calling (201) 652-5300 x238. Please mail completed application along with proof of service, a copy of discharge or DD214, proof of Waldwick residency (current or past), an 8 x 10 military photo and \$25.00 check made payable to the Borough of Waldwick – Wall of Heroes to the Mayor's Office, 63 Franklin Turnpike, Waldwick, NJ 07463.



The calendar is brought to you through the generosity of the following sponsors:

Allendale/Waldwick PBA Local 217 • Bancroft Dobrin Orthodontics • Craig Bossong, Esq.
Boswell Engineering • Richard J. Brady, Esq. • David Christensen, DMD/Ryan Burke, DDS, MS
Christie's International Real Estate • The Forum School • Gaeta Recycling
Home Hardware • LaTorre Landscaping • PIA – Professional Insurance Associates
Pristine Properties Power Washing • Rocco A. Palaia, Tax Consultant • Prime Travel
Terminal Construction Corp. • Terrie O'Connor Realtors • Waldwick Auto Service Center
Waldwick Chamber of Commerce

REMINDER

NO Dumpsters/Container storage on any street from December 1 through April 1



SNOW REMOVAL LAWS

Parking When Streets are Snow Covered - It is prohibited to park on snow covered streets. The parking prohibition continues until the snow stops and the streets are plowed.

Removal of Snow and Ice from Vehicles - Snow and ice must be removed from all vehicles, including the roof and hood, before driving.

Clearing of Sidewalks - Shoveling of sidewalks is required for the full width and including the driveway apron. Corner properties must provide access to public streets. Shoveling must be done within twenty-four (24) hours after the snow or ice storm has stopped. Throwing, casting, placing or depositing snow and ice in the street or on a neighboring property without permission is strictly prohibited.

Clearing Around Fire Hydrants - Property owners with a fire hydrant on their property must maintain a three-foot radius of the perimeter of a fire hydrant free of snow and ice so that there is no impediment to the use of the fire hydrant. The removal of snow and/or ice shall be completed within 24 hours after the snow has formed or fallen on or around any hydrant.

Violations for non-compliance with any of the above will be issued by the Police Department. Each day that the owner or occupant of the premises is in violation and shall be considered a separate violation.

Borough of Waldwick
63 Franklin Turnpike
Waldwick, NJ 07463

Prsrt Std
ECRWSS
US Postage
PAID
Permit # 35
W Caldwell, NJ

*****ECRWSS*****

**POSTAL PATRON
WALDWICK, NJ 07463**

DATED MATERIAL